

Pivot Table : We are well aware about the unique features of the Pivot table Report. It is very useful to analyse, drill down, summarise, compare and so on.. large amount of data just clicking the desired field or section very quickly and effectively.

While working with different worksheets, often there is required to protect the worksheets for its security reason or to maintain the uniformity of the file structure or may be another reason. In case of protected worksheet, access if Pivot Table Report is denied.

However the use of **Macro**, would facilitate to get an access PivotTable Report even the worksheet is protected . Not only that, **Macro** would also enable to get control over filtering the Field wise report as per the requirement.

To get experience how to use **Macro** in **Protected Worksheet** following illustration can be referred.

This table contains data as mentioned below.

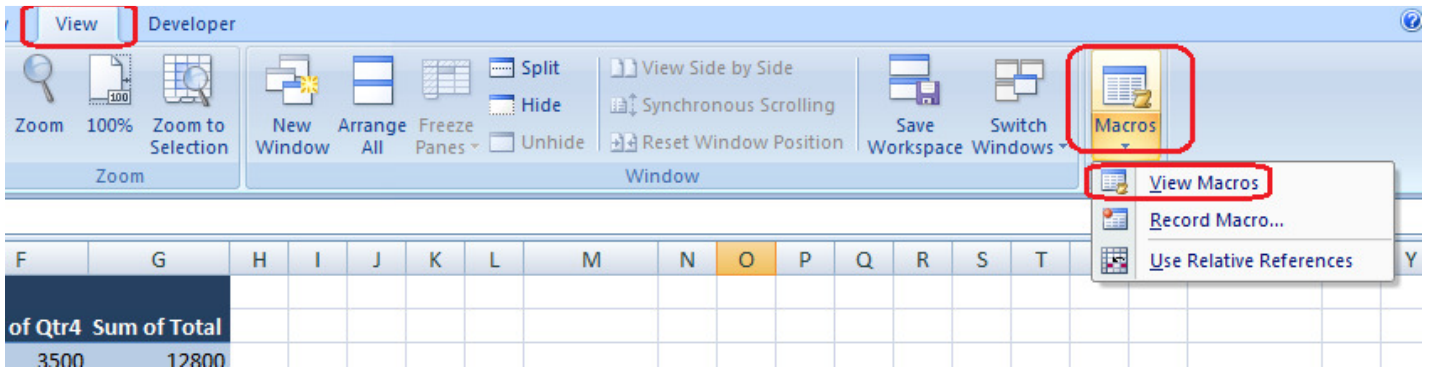
A	B	C	D	E	F	G	H	I
				Sale in Rs.				
	Zone	Name	Product	Qtr1	Qtr2	Qtr3	Qtr4	Total
	West	Ganesh	Dinner Set	1000	1500	1600	1800	5900
	West	Ganesh	Crystal Glass	1100	1400	1500	1900	5900
	East	Pravin	Crystal Glass	1200	1300	1400	1500	5400
	East	Pravin	Dinner Set	1000	1400	1200	1600	5200
	North	Mahesh	Dinner Set	1900	1700	1800	2000	7400
	East	Partha	C/Saucer	1600	1700	1800	1600	6700
	East	Partha	Crystal Glass	1500	1400	1600	1800	6300
	North	Mahesh	Dinner Set	1000	1400	1200	1600	5200
	North	Kunal	Crystal Glass	1900	1700	1800	2000	7400
	North	Mahesh	C/Saucer	1700	1900	1600	2000	7200
	North	Kunal	Crystal Glass	1200	1300	1400	1500	5400
	North	Mahesh	Dinner Set	1100	1400	1500	1300	5300
	South	Ram Babu	Dinner Set	1900	1700	1600	1800	7000
	South	Shaijil	Crystal Glass	1300	1600	1700	1400	6000

Pivot Table Report designed to get the “Zone” wise as well “Name” wise report filter.

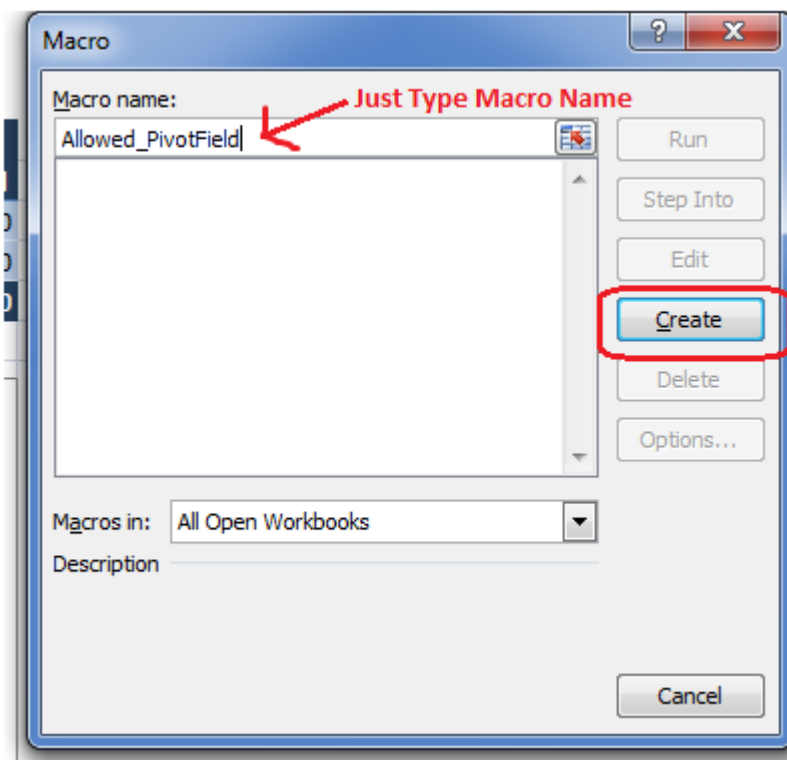
	A	B	C	D	E	F	G	
1		Zone	(All)					
2		Name	Kunal					
3								
4		Values						
5		Row Labels	Sum of Qtr1	Sum of Qtr2	Sum of Qtr3	Sum of Qtr4	Sum of Total	
6		Crystal Glass	3100	3000	3200	3500	12800	
7		Grand Total	3100	3000	3200	3500	12800	
8								

The user will get access to generate the report accordingly and in no circumstances will be able to change the structure of Pivot Table Report format. To do the same a **Macro** to be created as following:

Step 1: Click on **View**, go to **Macros** and select **View Macros**



Step2: Type Macro name(In illustration macro name put as “Allowed_PivotField”). Then **click on Create**



On clicking **Create** following box will be appear. Just write the step by step commands and close the window.

```

(General) Allow_PivotField
Sub Allow_PivotField()
Dim pt As PivotTable
Dim pf As PivotField
Dim ws As Worksheet

On Error Resume Next

For Each ws In ActiveWorkbook.Worksheets
    ws.Unprotect Password:="1234"

Set pt = ActiveSheet.PivotTables(1)
Set pf = pt.PivotFields("Zone")
pf.EnableItemSelection = True
Set pf = pt.PivotFields("Name")
pf.EnableItemSelection = True

Next ws

For Each ws In ActiveWorkbook.Worksheets
    ws.Protect Password:="1234", _
        AllowUsingPivotTables:=True

Next ws

With ActiveSheet.PivotTables(1)
    .EnableFieldList = False

End With
    
```

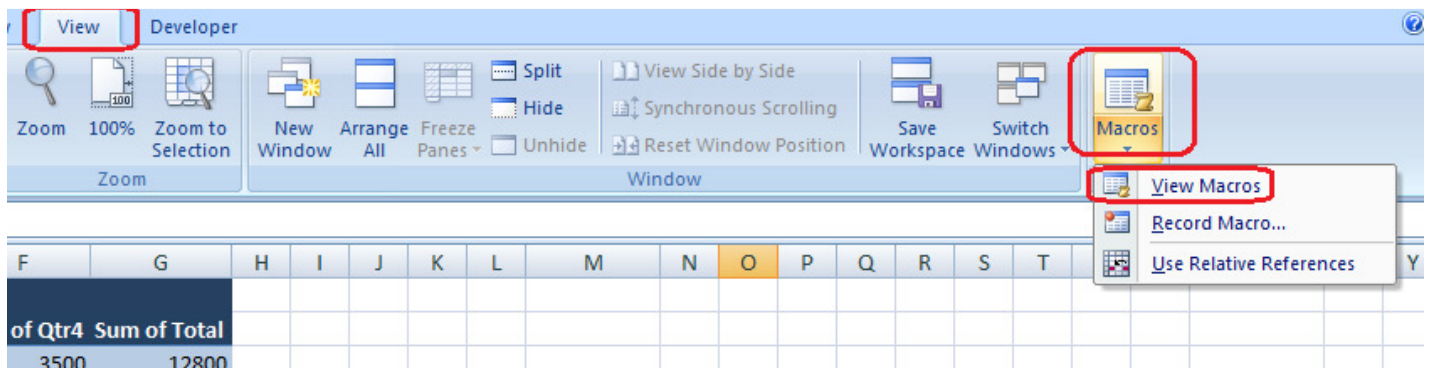
Suppose password is: 1234
It will enable unprotect worksheets

pt.PivotFields(" ") allow the respective field to access in Pivot Table Report

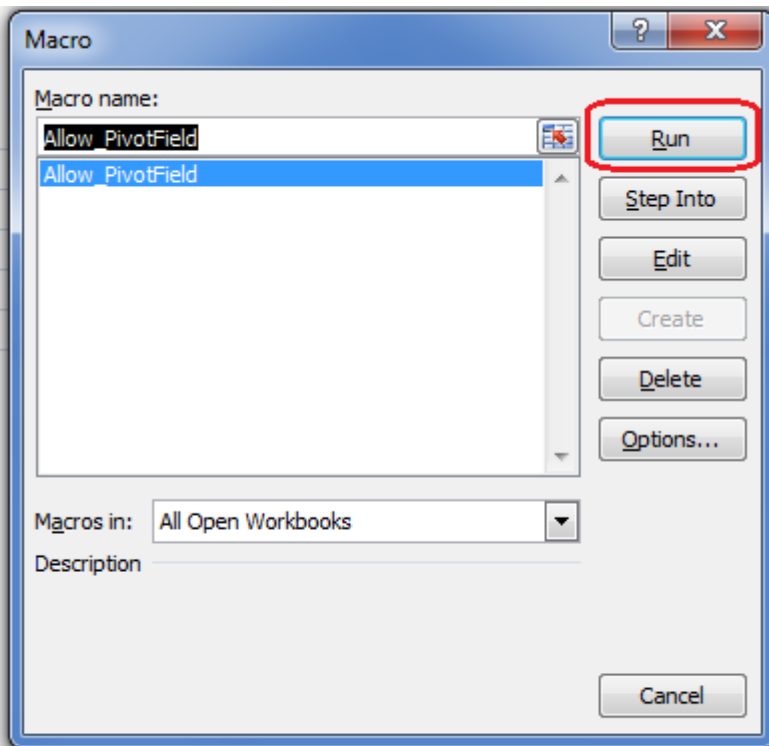
It will again protect the sheets

.EnableFieldList=False will disable the user to change any Field in Pivot Table Report

Step3: To run the macro go to **View** , Click on **Macros**, Select **View Macros**



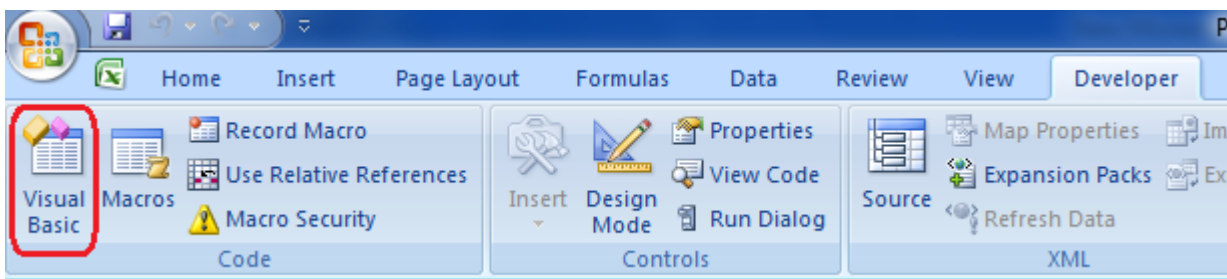
Click on **Run**



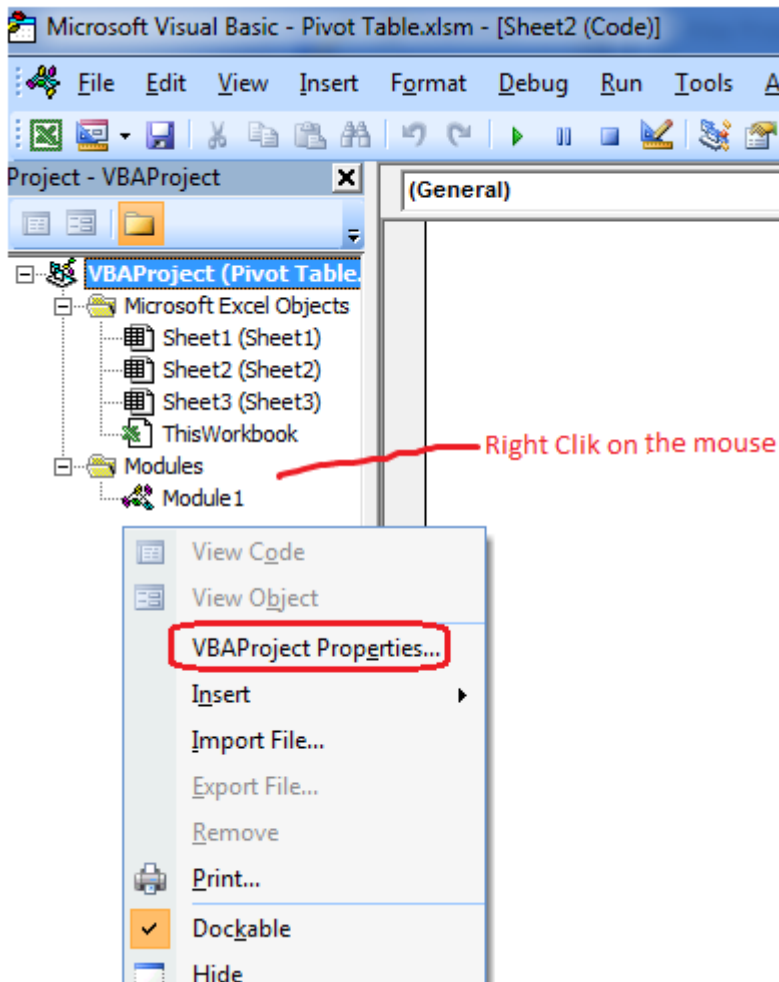
You will be noticed how it works. Save the file as .xlsm(for Excel2007 version) to keep the macro in same file.

To protect the Macro from unauthorised changes please save your project as per following:

Step1: Go to **Developer**, Click on **Visual Basic**



Step2: Right click on the mouse and select **VBA Project Properties**



Click on **Protection** and put relevant password to protect the macro commands.

